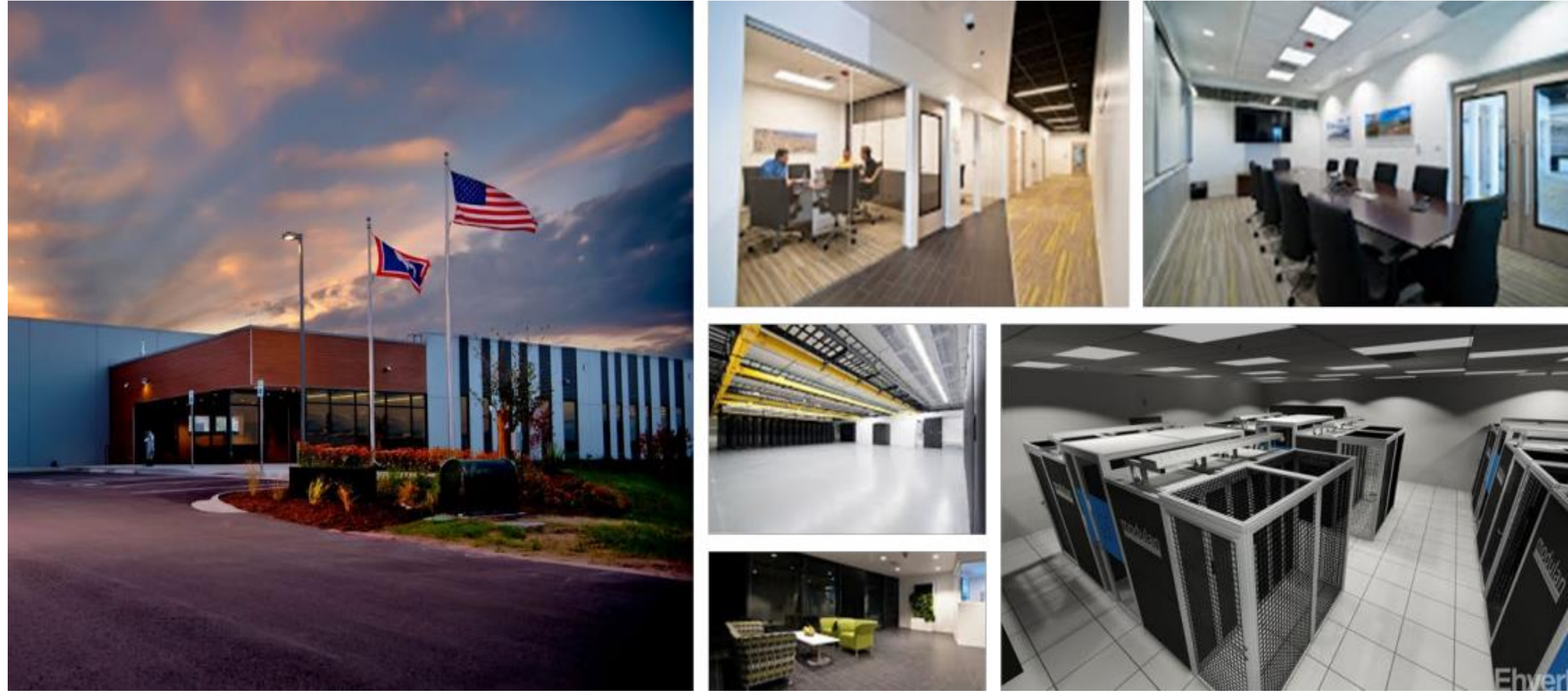


340 Progress Circle Cheyenne, Wyoming

42,000 SF | 5.0 MW | Purpose-built
data center | 10-acre campus



STRATEGICALLY LOCATED

- Strategically located with low latency to major data center hubs in New York, Los Angeles, Chicago, and Dallas
- **Designed** to house **wholesale**, **retail**, and **cloud** colocation services for high power density customers



FACILITY HIGHLIGHTS

- Forms the **nucleus** of a planned, **multi-building** data center **campus**
- Abundant, reliable power

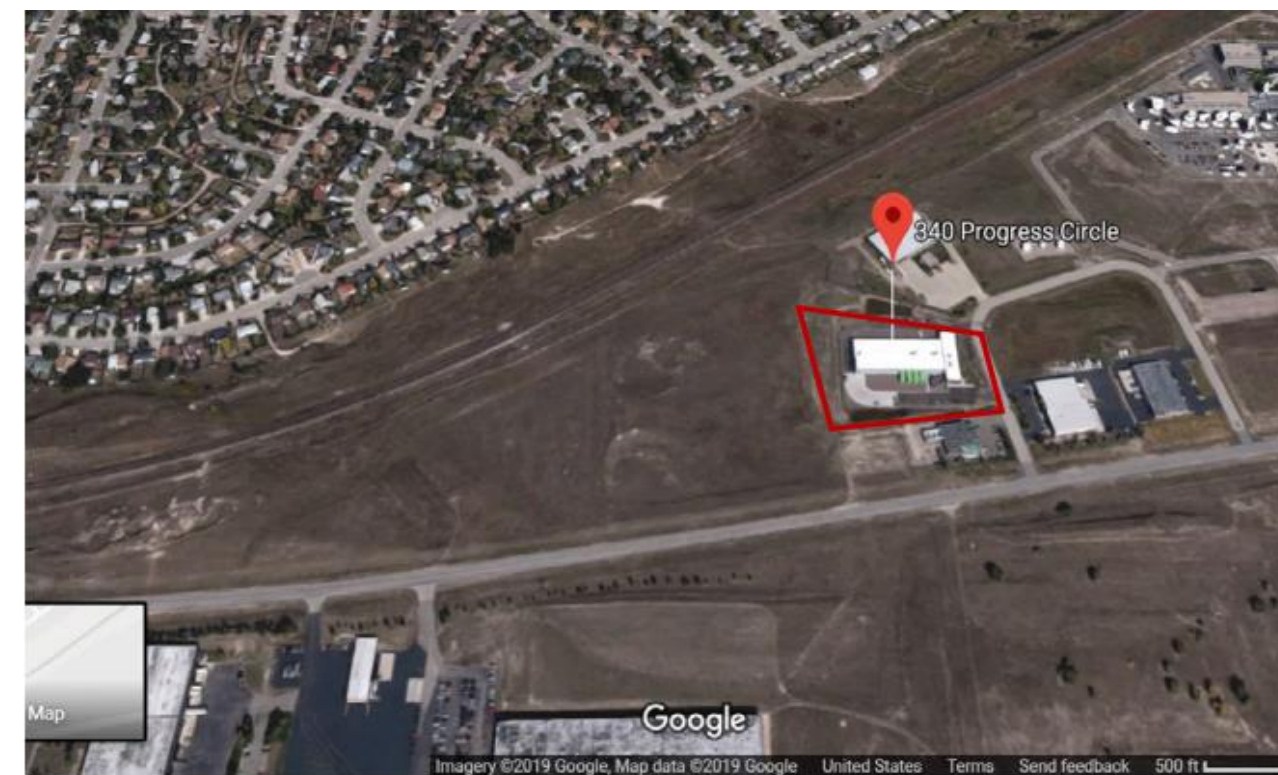
CENTRALIZED LOCATION



Attractive centralized location



Nearby airports

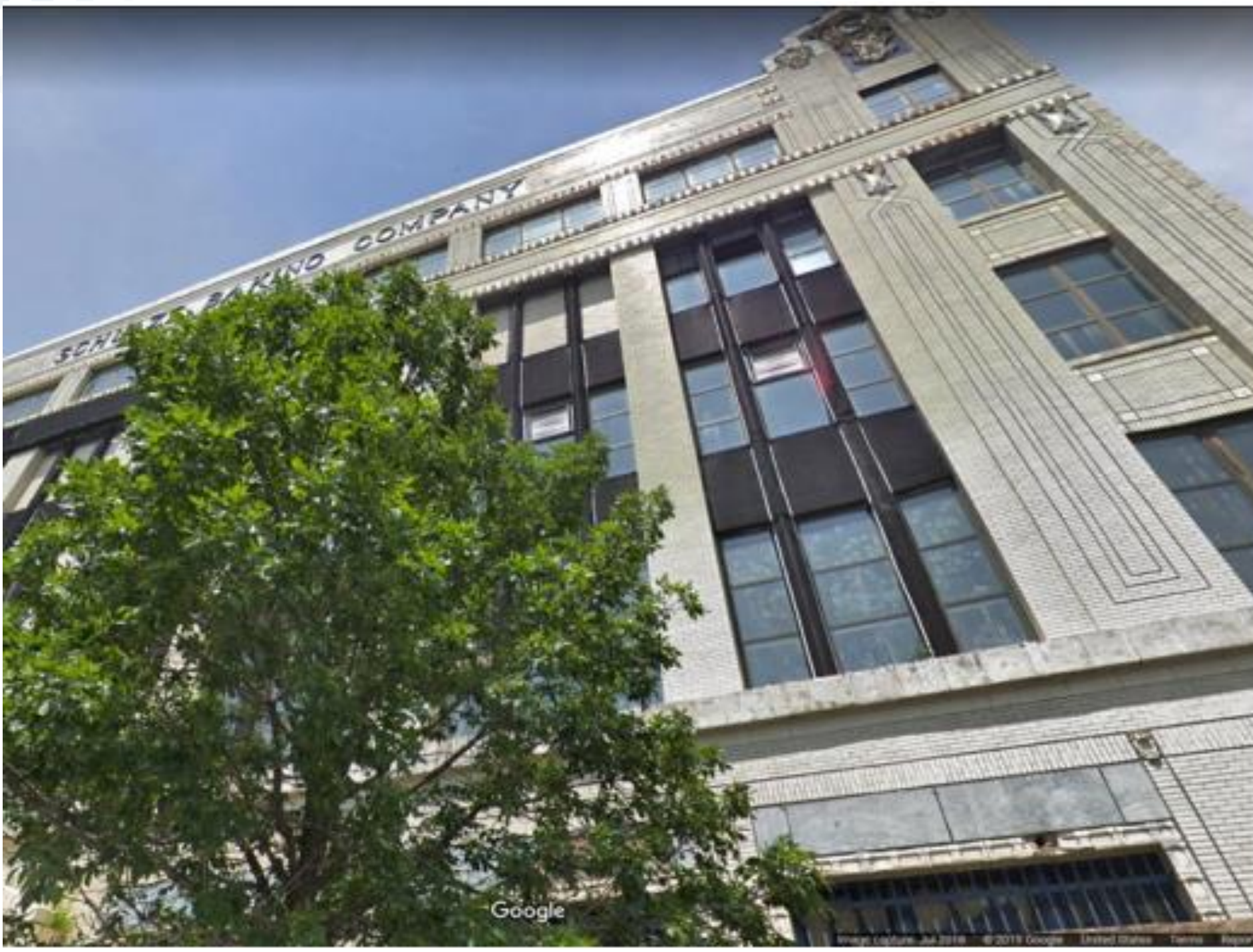


fifteenfortyseven
CRITICAL SYSTEMS REALTY

To schedule a tour
and for additional information

Please contact our team at

info@1547realty.com



Why Cheyenne?

- ✓ The growth of Wyoming's tech sector is a priority among local leaders
- ✓ Wyoming Sales and Use Tax Incentives available
- ✓ The energy-efficient climate offers optimal cool and dry environment
- ✓ The strategic location is 90 miles north of Denver
- ✓ The expansive 10-acre campus has room for growth
- ✓ High-bandwidth fiber network in the region



Total Size of Building

- ✓ 42,000 SF – expandable to 60,000 SF
- ✓ 7,500 SF – Office / DR Space
- ✓ 14,500 SF Ancillary Support Space
- ✓ 60,00 SF Expansion has been approved



Connectivity

- ✓ 10 and 100 GB fiber lines available
- ✓ Redundancy across 4 network carriers
- ✓ 100 Gbps network capacity
- ✓ Low latency to major data center hubs in New York, Los Angeles, Chicago, and Dallas



Power

- ✓ 5.0 MW
- ✓ 3.0 MW Critical Load
- ✓ 6.0 MW available for expansion
- ✓ Low-cost power – PUE <1.3



Carriers on Site

Carrier-neutral facility with on-net provider, including:

- CenturyLink
- Zayo
- Level3
- Charter



Infrastructure

- ✓ Power is delivered in an N+1 concurrently maintainable configuration
- ✓ Coupled with 2N distribution to the cabinet

About fifteenfortyseven Critical Systems Realty (“1547”)

fifteenfortyseven Critical Systems Realty (“1547”) is a leading developer, operator, and owner of highly interconnected, custom-designed data centers with over 1.1 million square feet of data center space under management throughout North America and Europe. 1547 selects sites, designs facilities, and manages developments to optimize returns for all stakeholders across new and interconnected properties. With interconnection in the company's DNA, 1547's connectivity-focused portfolio of data centers includes carrier hotels and core connectivity hubs designed to deliver customized mission-critical solutions from concept to connection.

