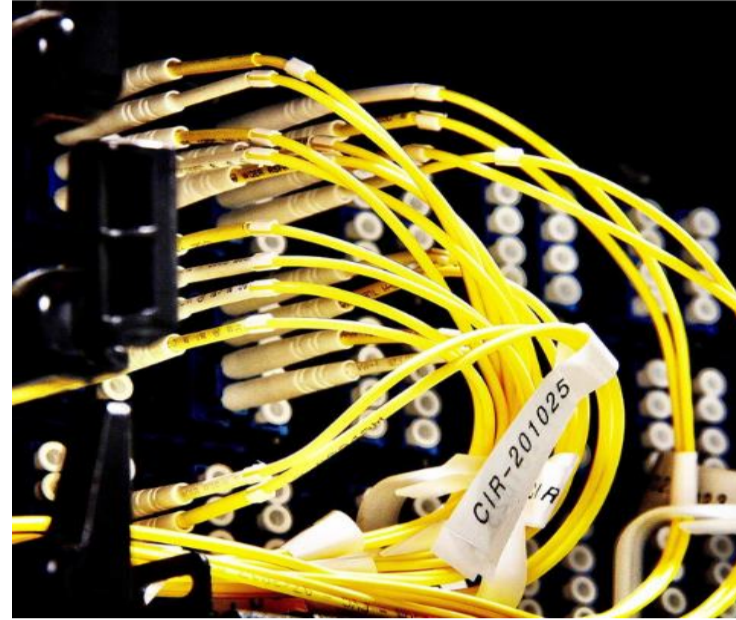


# 324 E Wisconsin Ave, Milwaukee, Wisconsin

160,000 SF | Up to 12 MW building capacity design | Premier carrier hotel of Milwaukee



## STRATEGICALLY LOCATED

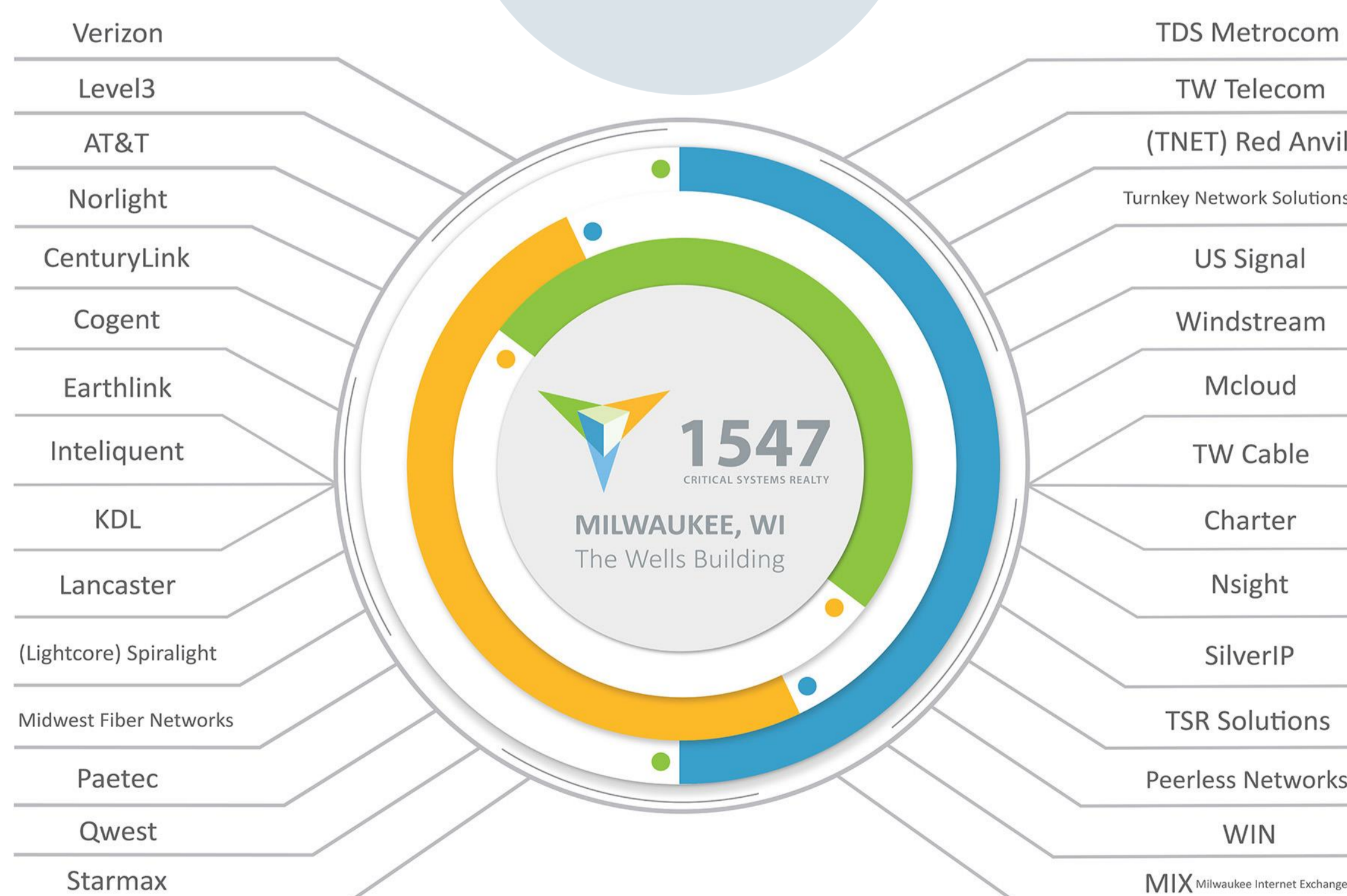
Strategically located and deeply networked, **the Wells Building** is a **technology hub** infused with history and positioned for the future of connectivity. With tech- and people-space of all sizes and needs, the Wells Building is the global station for today's technology-driven businesses.



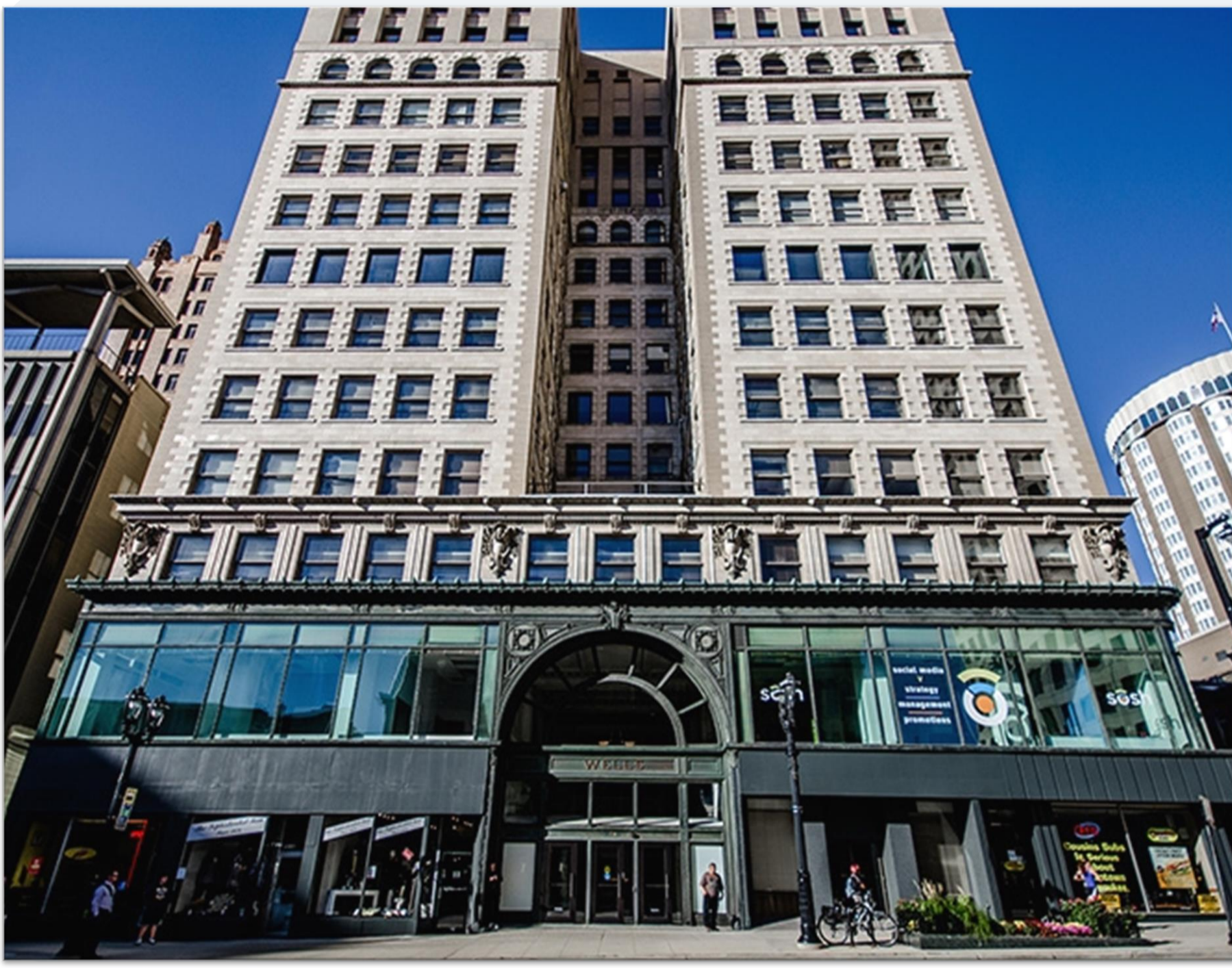
## FACILITY HIGHLIGHTS

- Premier **carrier hotel** of Milwaukee
- 160,000-sq-ft, 15-story building
- One of the **most** network-dense carrier hotel data centers in the Midwest

## NETWORK CONNECTIVITY



## NETWORK CONNECTIVITY



## Why Milwaukee?

- ✓ Premier carrier hotel of Milwaukee
- ✓ 160,000-sq-ft, 15-story building
- ✓ One of the most network-dense carrier hotel data centers in the Midwest
- ✓ Located in downtown Milwaukee with convenient access to public transit



### Space

- ✓ Multiple 9,000 sq. ft. floor plates are available
- ✓ Smaller turn-key suites
- ✓ Colocation cabinet space
- ✓ Art conference room, concierge services, bike storage, and free Wi-Fi throughout the building



### Network

- ✓ Carrier neutral
- ✓ Building owned and managed Meet-Me-Room
- ✓ 30+ Network operators
- ✓ 7 Diverse Points of Entry
- ✓ Vertical riser ducts for fiber



### Power

- ✓ Redundant and diverse (2) 208v and (1) 13.2v feeds
- ✓ 5MW Critical power available today
- ✓ Up to 12MW building capacity design
- ✓ 1500T cooling design



### Sustainability

- ✓ Large, energy-efficient windows maximize daylighting
- ✓ Building Automation systems and controls
- ✓ Efficient heating and cooling system
- ✓ New "closed loop" cooling system
- ✓ Low-flow bathroom faucets with motion sensors



### Security

- ✓ Central pre-action fire suppression
- ✓ Key card access
- ✓ On-site security



### Disaster Recovery

- ✓ Disaster recovery office and meeting space

## About fifteenfortyseven Critical Systems Realty ("1547")

[fifteenfortyseven Critical Systems Realty \("1547"\)](#) is a leading developer, operator, and owner of highly-interconnected, custom-designed data centers with over 1.1 million square feet of data center space under management throughout North America and Europe. 1547 selects sites, designs facilities, and manages developments to optimize returns for all stakeholders across new and interconnected properties. With interconnection in the company's DNA, 1547's connectivity-focused portfolio of data centers includes carrier hotels and core connectivity hubs designed to deliver customized mission-critical solutions from concept to connection.